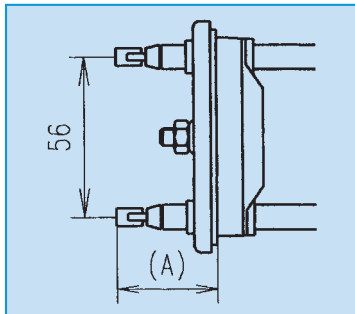


FISSAGGIO • SCHEMATIZZAZIONE

FIXING SYSTEMS

PER ELEMENTI SINGOLI • SINGLE ELEMENTS

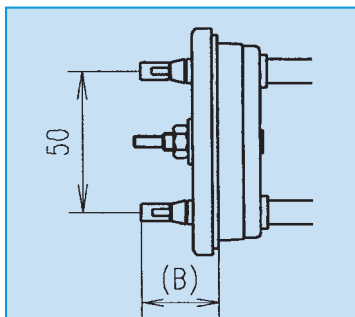
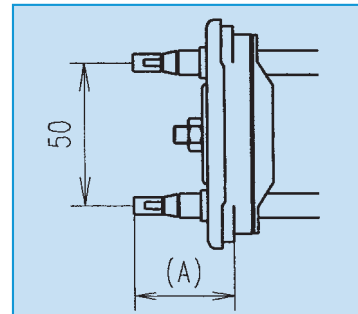


INTERASSE 56 CON FLANGIA CONIATA PER ELEMENTI CON GUAINA Ø 8.5

DISTANCE BETWEEN CENTRES 56, WITH CRIMPED FLANGE FOR ELEMENTS WITH SHEATH Ø 8.5

INTERASSE 50 CON FLANGIA CONIATA PER ELEMENTI CON GUAINA Ø 8.5 E Ø 6.25

DISTANCE BETWEEN CENTRES 50, WITH CRIMPED FLANGE FOR ELEMENTS WITH SHEATH Ø 8.5 AND Ø 6.25

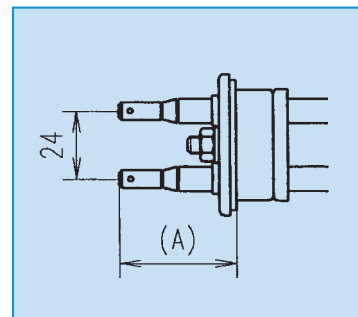


INTERASSE 50 CON CONTROFLANGIA CONIATA PER ELEMENTI CON GUAINA Ø 8.5 E Ø 6.25

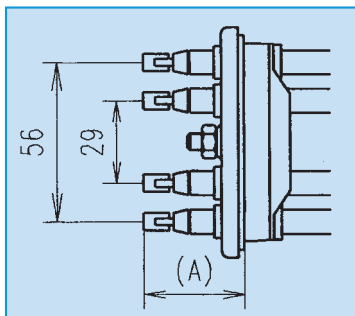
DISTANCE BETWEEN CENTRES 50, WITH CRIMPED COUNTERFLANGE FOR ELEMENTS WITH SHEATH Ø 8.5 AND Ø 6.25

INTERASSE 24 CON FLANGIA CONIATA PER ELEMENTI CON GUAINA Ø 8.5

DISTANCE BETWEEN CENTRES 24, WITH CRIMPED FLANGE FOR ELEMENTS WITH SHEATH Ø 8.5



PER ELEMENTI DOPPI • DOUBLE ELEMENTS

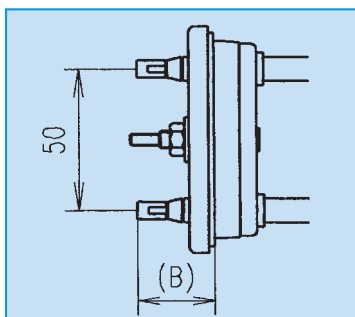
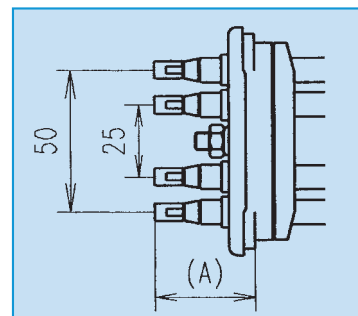


INTERASSE 56 E 29 CON FLANGIA CONIATA PER ELEMENTI CON GUAINA Ø 8.5

DISTANCE BETWEEN CENTRES 56 AND 29, WITH CRIMPED FLANGE FOR ELEMENTS WITH SHEATH Ø 8.5

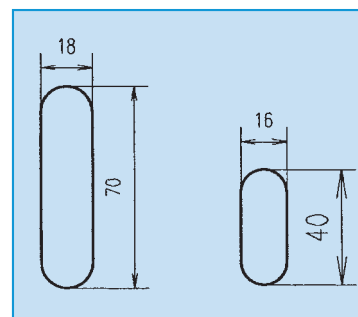
INTERASSE 50 E 25 CON FLANGIA CONIATA PER ELEMENTI CON GUAINA Ø 8.5 E Ø 6.25

DISTANCE BETWEEN CENTRES 50 AND 25, WITH CRIMPED FLANGE FOR ELEMENTS WITH SHEATH Ø 8.5 AND Ø 6.25



INTERASSE 50 CON CONTROFLANGIA CONIATA PER ELEMENTI CON GUAINA Ø 8.5 E Ø 6.25

DISTANCE BETWEEN CENTRES 50, WITH CRIMPED COUNTERFLANGE FOR ELEMENTS WITH SHEATH Ø 8.5 AND Ø 6.25



FERITOIE DI MONTAGGIO
MOUNTING HOLES

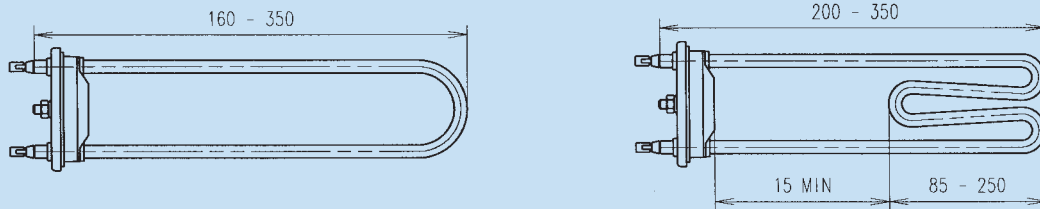
Per gli elementi che montano flange coniate, la sporgenza dalla battuta della guarnizione alle parti terminali (A) può variare da 32 a 36mm a seconda dei faston richiesti. Per gli elementi che montano controflange coniate la sporgenza dalla battuta della guarnizione alle parti terminali (B) può variare da 23 a 34mm a seconda dei faston richiesti.

For elements with crimped flanges, the back of the gasket can protrude 32 to 36 mm from the end parts (A), according to the pins required. For elements with crimped counterflanges, the back of the gasket can protrude 23 to 34 mm from the end parts (B) according to the pins required.

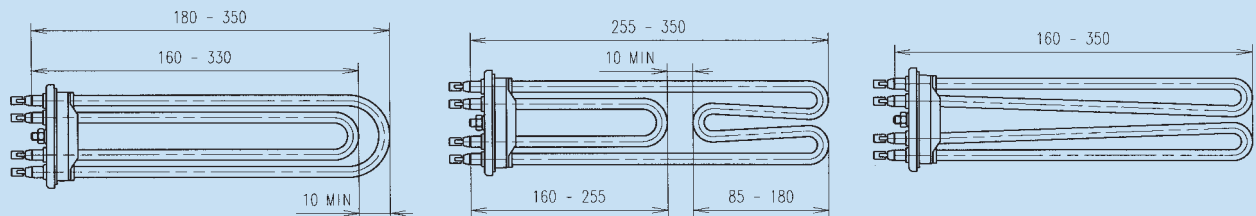
FORME E DIMENSIONI STANDARD

STANDARD SHAPES AND DIMENSIONS

ELEMENTI SINGOLI • SINGLE ELEMENTS



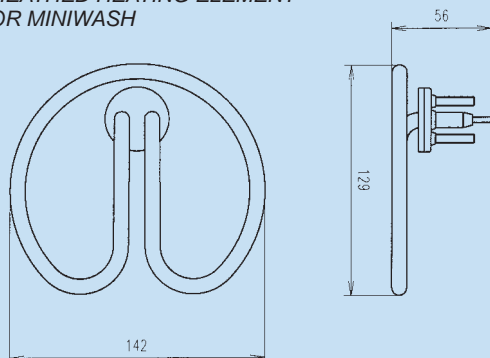
ELEMENTI DOPPI • DOUBLE ELEMENTS



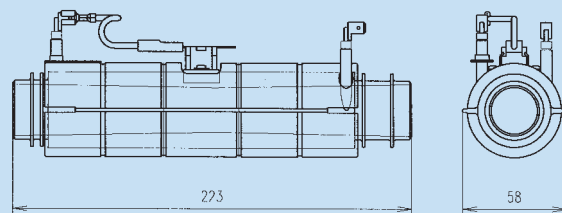
| TIPO ELEMENTO TYPE OF ELEMENT | PROTEZIONI E CONTROLLI POSSIBILI | SAFETY DEVI- CES AND CONTROLS | TENSIONI APPLICABILI VOLTAGE RANGE | POTENZE DISPONIBILI POWER RANGE | RAGGIO DI PIEGATURA BENDING RADIUS |
|--|--|-------------------------------------|---------------------------------------|------------------------------------|---------------------------------------|
| CORAZZATO Ø8.5 SHEATHED ELEMENT Ø8.5 | NESSUNA PROTEZIONE NO SAFETY DEVICE | | 60V - 400V | 200W - 3000W | 10.75 mm |
| | TERMOFUSIBILE THERMAL FUSE | | | | |
| | MICRO CON O SENZA NTC MICRO WITH OR WITHOUT NTC | | 100V - 240V | 200W - 2500W | MIN. 9 mm |
| | TERMOFUSIBILE+MICRO THERMAL FUSE+MICRO | | | | |
| CORAZZATO Ø6.25 SHEATHED ELEMENT Ø6.25 | NESSUNA PROTEZIONE NO SAFETY DEVICE | | 60V - 400V | 120W - 3200W | 8 mm MIN. 6 mm |
| TUBO RISCALDANTE PRESSOFUSO DIE-CAST HEATING TUBE | TERMOST. MAN. O AUT. MAN. OR AUTOM. THERMOSTAT | | 220V - 400V | 550W - 3000W | - |

ESECUZIONI SPECIALI • SPECIAL MODELS

ELEMENTO RISCALDANTE CORAZZATO PER MINIWASH
SHEATHED HEATING ELEMENT
FOR MINIWASH

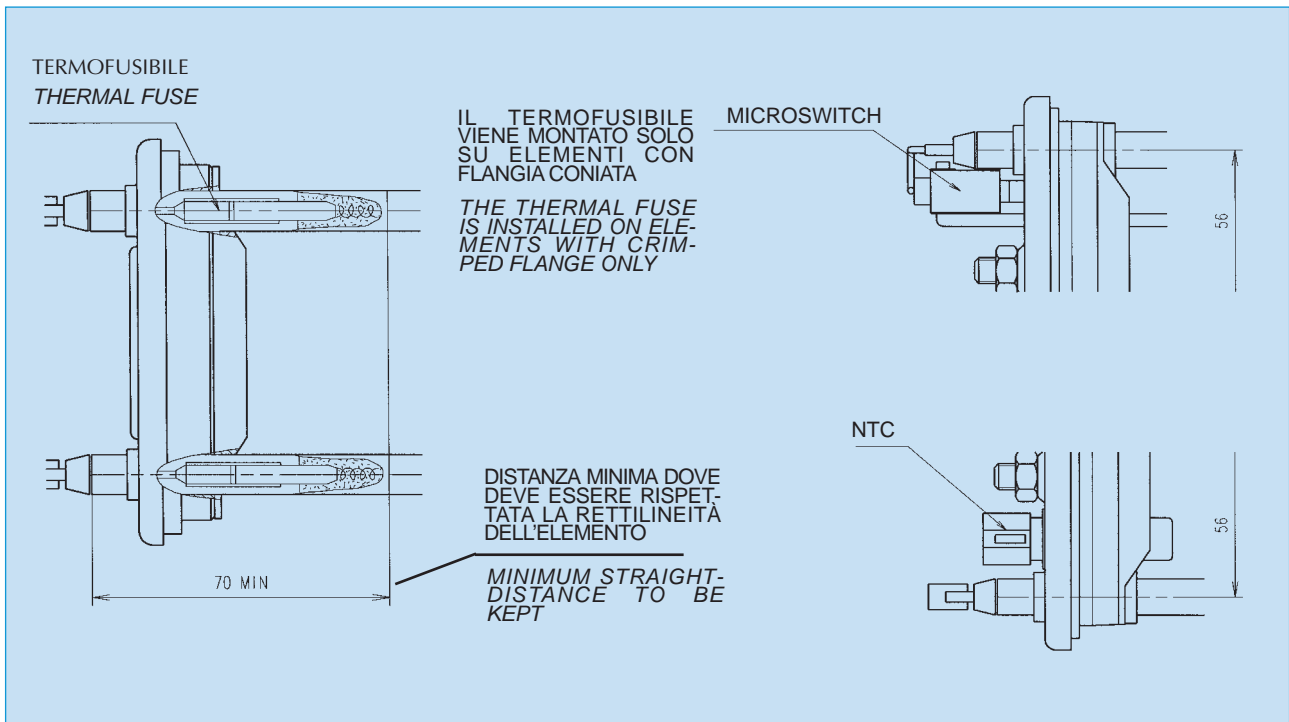


SCAMBIATORE TERMICO A FLUSSO
FLOW HEAT EXCHANGER



PROTEZIONI E CONTROLLI

SAFETY DEVICES AND CONTROLS



Schematizzazione di sistemi di sicurezza e controllo disponibili.

Outline of the available safety and control systems

Schema riassuntivo delle tipologie di resistenze in cui è possibile inserire protezione e controlli.

Summary table of the element types to which safety devices and controls can be added.

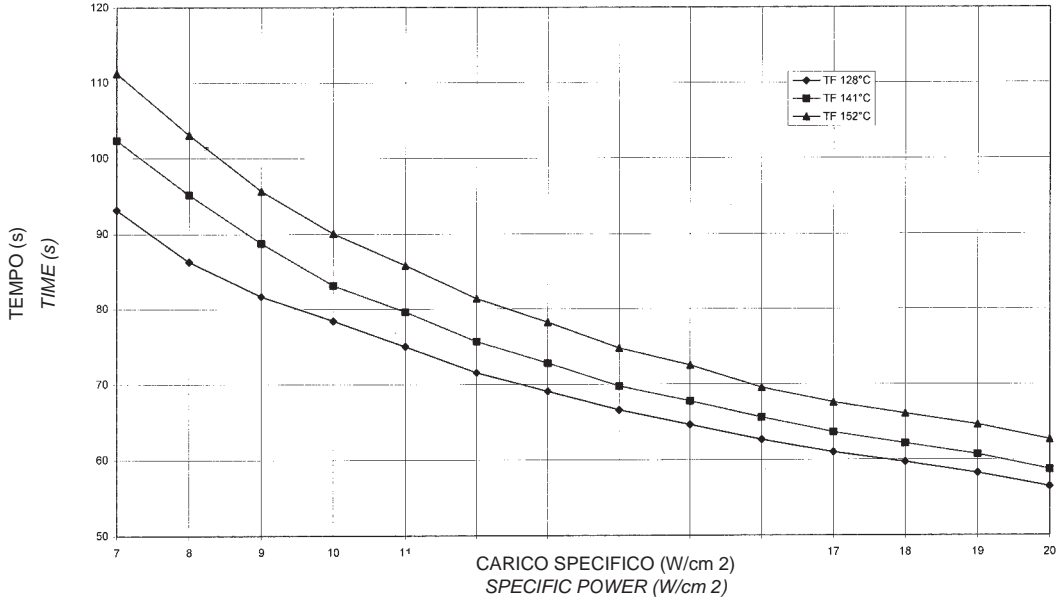
| DIAMETRO TUBO <i>TUBE DIAMETER</i> | TIPOLOGIA <i>TYPE</i> | PROTEZIONI E CONTROLLI <i>SAFETY DEVICES & CONTROLS</i> | | | |
|---------------------------------------|--------------------------|---|------------------|----------------|---|
| | | TF nr. no. | MICRO nr. no. | NTC nr. no. | |
| Ø 8.5 | FLANGIA CONIATA | Singolo interasse 56 <i>Single element with distance betw. centres 56</i> | 1 - 2 | 1 | 1 |
| | CRIMPED FLANGE | Doppio interasse 56 e 29 <i>Double element with distance betw. centres 56 and 29</i> | 1 - 4 | | |
| | | Singolo interasse 50 <i>Single element with distance betw. centres 50</i> | 1 - 2 | | |
| | | Doppio interasse 50 e 25 <i>Double element with distance betw. centres 50 and 25</i> | 1 - 4 | | |
| | | Singolo interasse 24 <i>Single element with distance betw. centres 24</i> | 1 - 2 | | |

TEMPO DI INTERVENTO DEI TERMOFUSIBILI

Elemento con perno in Fe

THERMAL FUSES CUT OFF TIMES

Elements with iron pin

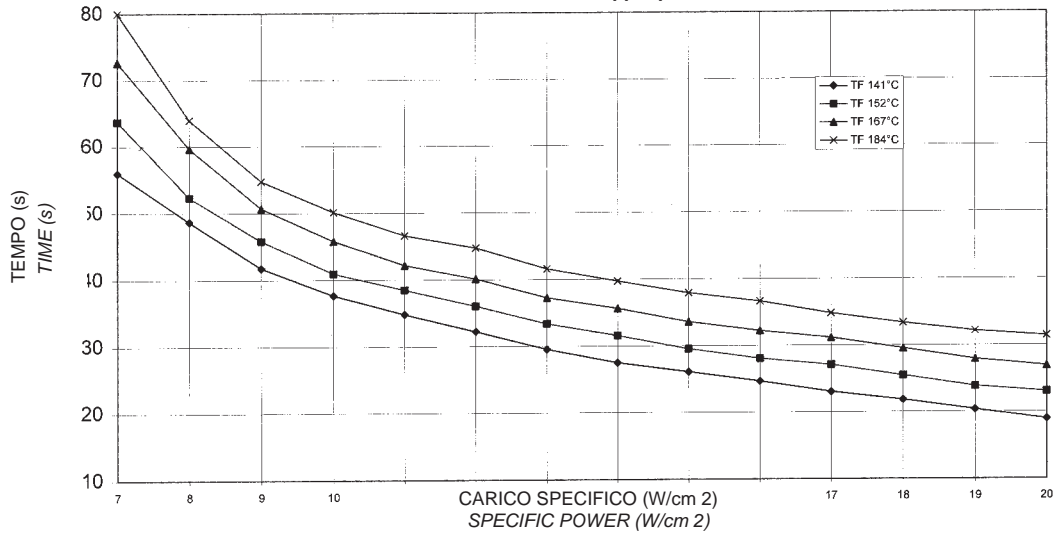


TEMPO DI INTERVENTO DI TERMOFUSIBILI

Elementi con perno in Cu

THERMAL FUSES CUT OFF TIMES

Elements with copper pin



TEMPERATURA DELLA GUAINA CON ALIMENTAZIONE IN ARIA

TEMPERATURE OF THE SHEATH WITH AIR SUPPLY

